

Sonofine EUS Series

Ultrasound Diagnostic Imaging System

A new revolutionary B/W portable Ultrasound Diagnostic Imaging System, offers a combination of advanced imaging technologies and outstanding ergonomic design. It features abundant measurement and analysis software packages and powerful functions, making it suitable for abdomen, OB, GYN, urology, cardiology, and small parts.

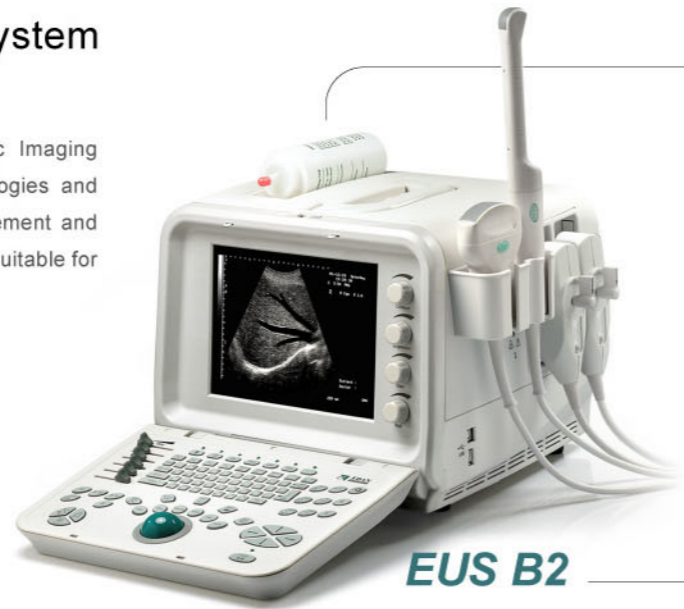
Friendly and easy-to-use

- Foldup control panel
- 10" non-interlaced display
- Ergonomic design backlight keyboard



Advanced transducer technology

- Multi-frequency probes ensure high image quality under different applications
- 80 elements and 20 channel convex probe as standard



EUS B2

Feaure

- 10" SVGA high resolution non-interlace monitor
- 8 gamma correction and 6 slides TGC control
- 256 frames bidirectional cineloop
- 16 frames permanent image storage
- Support video printer and laser printer
- Image transfer via USB port to USB flash disk or PC
- Software package for obstetrics, gynecology, urology and cardiology

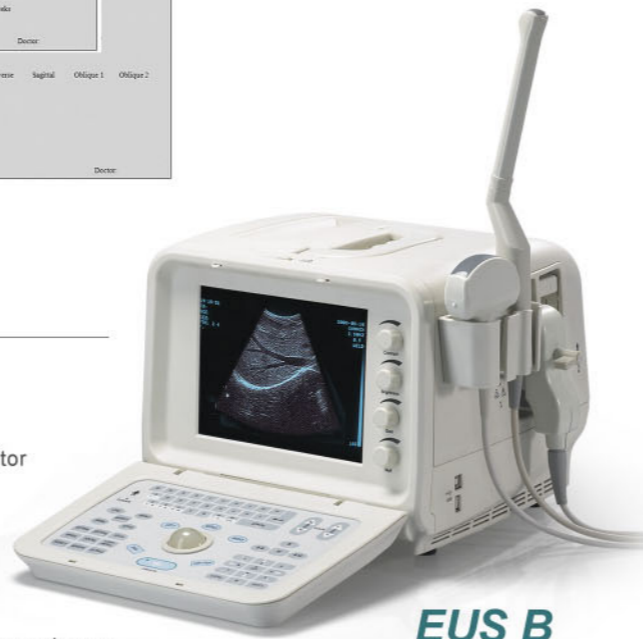


EUS B2 Plus

Comprehensive Software and report

Patient:	Hospital Name:	Sex:
End Diastolic V:	Lab: Obstetric_B	Inf: Venous: M
End Systolic V:		
Stroke Volume:		
Ejection Fraction:		
L.A. diameter:	Patient:	Hospital Name:
L.A. posterior wall:	Sex:	Sex:
Aortic Diameter:	Lab:	Lab:
AC Separation:		
AV Ejection Time:		
IC:		
D-E Excursion:	AC:	
E-F Slope:	TL:	
E-F Slope:	SL:	
A-C Interval:	Average Fetal Age:	Sex:
E-V3 Distance:	LMP:	Oblique 1:
E-F Slope:	B-C Slope:	Oblique 2:
Uterus Length:	ATI:	
Uterus AP Dia:	HC/AC Ratio:	89% 117/140/11-49wks
Uterus Width:	FL/AC Ratio:	20% 24/121-49wks
Left ovary Length:	FL/BPD Ratio:	71% 87/121-49wks
Left ovary AP Diameter:	Fetal weight:	
Left ovary Width:		
Right ovary Length:	Height:	Height:
Right ovary AP Diameter:	Weight:	Weight:
Right ovary Width:	Type:	Type:
Endometrial Thickness:	Type2:	Type2:
	Type3:	Type3:
	Type4:	Type4:
	Type5:	Type5:
	Type6:	Type6:
	Type7:	Type7:
	Type8:	Type8:
	Type9:	Type9:
	Type10:	Type10:
	Type11:	Type11:
	Type12:	Type12:
	Type13:	Type13:
	Type14:	Type14:
	Type15:	Type15:
	Type16:	Type16:
	Type17:	Type17:
	Type18:	Type18:
	Type19:	Type19:
	Type20:	Type20:
	Type21:	Type21:
	Type22:	Type22:
	Type23:	Type23:
	Type24:	Type24:
	Type25:	Type25:
	Type26:	Type26:
	Type27:	Type27:
	Type28:	Type28:
	Type29:	Type29:
	Type30:	Type30:
	Type31:	Type31:
	Type32:	Type32:
	Type33:	Type33:
	Type34:	Type34:
	Type35:	Type35:
	Type36:	Type36:
	Type37:	Type37:
	Type38:	Type38:
	Type39:	Type39:
	Type40:	Type40:
	Type41:	Type41:
	Type42:	Type42:
	Type43:	Type43:
	Type44:	Type44:
	Type45:	Type45:
	Type46:	Type46:
	Type47:	Type47:
	Type48:	Type48:
	Type49:	Type49:
	Type50:	Type50:
	Type51:	Type51:
	Type52:	Type52:
	Type53:	Type53:
	Type54:	Type54:
	Type55:	Type55:
	Type56:	Type56:
	Type57:	Type57:
	Type58:	Type58:
	Type59:	Type59:
	Type60:	Type60:
	Type61:	Type61:
	Type62:	Type62:
	Type63:	Type63:
	Type64:	Type64:
	Type65:	Type65:
	Type66:	Type66:
	Type67:	Type67:
	Type68:	Type68:
	Type69:	Type69:
	Type70:	Type70:
	Type71:	Type71:
	Type72:	Type72:
	Type73:	Type73:
	Type74:	Type74:
	Type75:	Type75:
	Type76:	Type76:
	Type77:	Type77:
	Type78:	Type78:
	Type79:	Type79:
	Type80:	Type80:

- Reliable diagnosis software packages of obstetrics, gynecology, urology and cardiology
- Four separated reports for above softwares can be printed out by video printer or laser printer

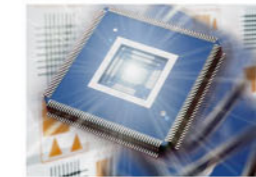


EUS B

Feaure

- 10" non-interlaced monitor
- Multi-frequency probes
- Real-time zooming
- Color-coded display
- 206-frame cineloop
- 32-frame permanent image storage
- USB port for image transferring to PC
- Various EFW and standard obstetrical report

Large memory for image storage



- 16 frames permanent image storage
- 256 frames bidirectional cineloop

Efficient data management

- Support USB flash disk for more images storage and program update
- Directly connected to PC via USB port for image transferring
- Windows based PC software for image transferring and management

